

Assessment of Obstetric and Foetal Outcome among Unbooked Mothers at Alqassimi Womens and Children Hospital, Sharjah

Sameera Suleiman¹, Sinu Pappan²

¹Assistant Director of Nursing Affairs, ²Staff Nurse, Emergency Department,
Al Qassimi Women's and Children's Hospital Sharjah

Abstract

A retrospective study was been undertaken to determine the obstetrical and fetal outcome among unbooked mother's in a tertiary referral hospital. This study is to rule out the fetal and obstetrical outcome such as asphyxia, abruptio placenta; etc .

A quantitative research approach is used. The data were been collected using electronic medical record of the unbooked population and analyzed by using descriptive statistics. Among 100 unbooked 74% are from Sharjah and 25% from Ajman. 82% are anemic. These few complications out of the vast leads on to life threatening situations. The Primary Health Center accessibility towards these vulnerable population have to be drastically improved that indirectly graphs up the maternal and fetal health.

Keyword: *Fetal outcome, maternal outcome, unbooked mothers.*

Introduction

²Antenatal care plays a crucial part in the maternal and fetal wellbeing and the obstetrical outcome as well. The fulfilment of antenatal visits ensures a better labour outcome.³ The World Health Organization has issued a new series of recommendations to improve quality of antenatal care to reduce the risk of stillbirths and pregnancy complications and give women a positive pregnancy experience.⁴ By focusing on a positive pregnancy experience, these new guidelines seek to ensure not only a health pregnancy for mother and baby, but also an effective transition to positive labour and childbirth and ultimately to a positive experience of motherhood.

¹Research reveals that unbooked patients end up with unfavorable maternal and fetal outcomes: JT Muthir, YA Nytiputen (2007; October), conducted a study to determine the incidence of maternal and perinatal outcome among unbooked patients and the associated

pathologies. Emphasizing benefits of the antenatal visits that eradicates and controls the unfavorable conditions. Resolution of the above situation requires Collaborative interdisciplinary approach among the tertiary care facility and the community centers.

Materials and Method

This was a retrospective study of unbooked patients managed at Al Qassimi Women's and Children's hospital, Sharjah. Over a period of 10 months since the commencement of the facility, through convenience sampling approach 100 patients were been selected from the vast unbooked populations. Data collection was done after obtaining ethical clearance from the research ethical committee.

The electronic medical records of all mothers who had no forms of antenatal care and free from police case but, delivered in Alqassimi women's and children's hospital were collated and evaluated.

The following information were collected; age, gestation, nationality, occupation, mode of delivery, anemia status and fetal characteristics such as diagnosis during the presentation, birth weight, condition after delivery. The data collected were entered into SPSS computer software and analyses.

Corresponding Author:

Sameera Suleiman

Assistant Director of Nursing Affairs, Al Qassimi Women's and Children's hospital, Sharjah
e-mail: beetrose@yahoo.com

Result

In this section, statistical analysis and interpretation of collected data were organized under two sections.

Section I: Maternal characteristics:

Table 1: Parity

		Frequency	Percent	Valid Percent	Cumulative Percent
Valid	Para 1	13	12.9	13.0	13.0
	2-4	58	57.4	58.0	71.0
	More than 4	29	28.7	29.0	100.0
	Total	100	99.0	100.0	
Missing	System	1	1.0		
Total		101	100.0		

Table 2: Gestation

		Frequency	Percent	Valid Percent	Cumulative Percent
Valid	Less than 37	11	10.9	11.0	11.0
	37 to 42	78	77.2	78.0	89.0
	More than 43	11	10.9	11.0	100.0
	Total	100	99.0	100.0	
Missing	System	1	1.0		
Total		101	100.0		

Table 3: Anemia

		Frequency	Percent	Valid Percent	Cumulative Percent
Valid	less than or =10	82	81.2	82.0	82.0
	more than 10	18	17.8	18.0	100.0
	Total	100	99.0	100.0	
Missing	System	1	1.0		
Total		101	100.0		

Section II: Fetal Characteristics:

Table 4: Diagnosis During Delivery

		Frequency	Percent	Valid Percent	Cumulative Percent
Valid	Normal	20	19.8	20.0	20.0
	Preterm	41	40.6	41.0	61.0
	Fetal Death	2	2.0	2.0	63.0
	Preeclamsia	13	12.9	13.0	76.0
	Abruptio	5	5.0	5.0	81.0
	Car Delivery	16	15.8	16.0	97.0
	Prolong Labour	3	3.0	3.0	100.0
	Total	100	99.0	100.0	
Missing	System	1	1.0		
Total		101	100.0		

Table 5: Fetal condition

		Frequency	Percent	Valid Percent	Cumulative Percent
Valid	Severe Asphyxia	5	5.0	5.0	5.0
	Moderate Asphyxia	33	32.7	33.0	38.0
	Mild Asphyxia	43	42.6	43.0	81.0
	None	19	18.8	19.0	100.0
	Total	100	99.0	100.0	
Missing	System	1	1.0		
Total		101	100.0		

Table 6: Fetal weight

		Frequency	Percent	Valid Percent	Cumulative Percent
Valid	Very Low Weight 1500	1	1.0	1.0	1.0
	Low Birth Weight 1500-2499	27	26.7	27.0	28.0
	Normal Birth Weight 2500-3999	53	52.5	53.0	81.0
	Macrosomial More Than 4000	19	18.8	19.0	100.0
	Total	100	99.0	100.0	
Missing	System	1	1.0		
Total		101	100.0		

The majority patients are from Sharjah 74%. 60% of their mode of delivery was cesarean due to many reasons for instance; placenta previa, maternal diabetes leading to macrosomal baby, pre-eclampsia, ect. 82% are with low hemoglobin level which in a situation of postpartum hemorrhage leads to shock.

The table shows 81% of fetus were born with mild, moderate and severe asphyxia and 5% severe. 41% preterm labor. It's evident from the above characteristic that the percentage of complication is high.

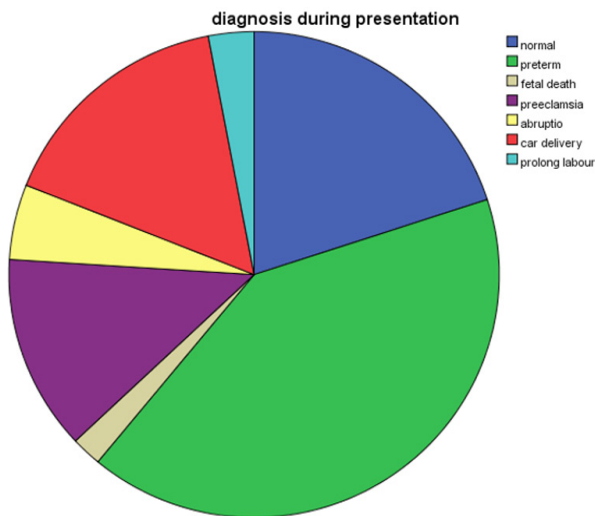


Figure 1: Diagnosis during presentation (fetal characteristic)

Conclusion

The antenatal care and knowledge gained during antenatal visits plays a vital role in the optimal maternal and fetal health. Appropriate visits especially prevents and controls the pregnancy related illness for instance gestational diabetes and hypertension it parallely prevents fetal demises. This research creates an awareness among maternal population by indirectly exploring the reason behind the un-booked case and finally correlation between the institution and the PHC to create awareness among the maternal population. This finding brews a path towards the fore coming women's campaign to concentrate on those population.

Acknowledgements: Dr. Safiya said, director of Al Qassimi Women's and Children's hospital, Sharjah, for her support and encouragement in allowing to carry out the survey process in the facility.

Source of Funding: Self

Conflict of Interest: Nil

Reference

1. J.T.Mutihir, Y.A.Niyyuten, Journal of Obstetrics and Gynecology, October 2007; 27(7); 695 -8.
2. Bail J.R, Kayode, Afr J Prim Health Care Fam Med.

2014; 6(1):656. Published online 2014 Dec 12. doi: 10.4102/phcfm.v6i1.656.

3. WHO world incidence of maternal and fetal health related illness. Available from <http://www.who.int.com>.
4. John C.O,Alegbeleye J.O, pregnancy outcome in unbooked Mother's at a teritiary health institution, Apr 20015;12(2): 124-6.Available from <http://www.pumid.com>.
5. Young W, Nauta M, Unbooked mother a cohort study, Jun 2004;281(4) 613-6.Available from ncbi.nlm.nih.gov/pubmed/19551396.